



# Waikato Photographic Society Inc.

## Hamilton's Camera Club

HAMILTON

[www.waikatophotosoc.org.nz](http://www.waikatophotosoc.org.nz)

### COMMITTEE

*President:* Jacqui Stokes  
*Immediate Past President:* Val Fabling  
*Secretary:* Lynda Mowat  
*Treasurer:* Val McArthur  
*Competition Secretary:* Val Fabling  
*Aperture:* Margi Parton  
*Projectionist:* Candi Harris + others  
*Webmaster:* Neil Rowe  
*Field Trips:* Julie Salisbury,  
Kay Goosen-Cooper FPSNZ HonPSNZ, Margaret Liddell  
**Co-opted:** *International Exchange & Judging Training:* John & Janet Greenwood

**"The best thing about a picture is that  
it never changes, even when  
the people in it do."  
— Andy Warhol**

### MEETINGS

7.30pm 2nd & 4th Tuesday of the month  
Methodist Church Hall, 6 Bader Street, Melville

### PHOTOGRAPHY SKILLS NIGHT

7.30pm 3rd Tuesday of the month  
22 Kensington Place, Chartwell

### COMPETITION ENTRIES

Due on the 2nd Tuesday of the month.  
**Either:** Bring prints and projected images  
on disc to the meeting **or** email to  
[competition@waikatophotosoc.org.nz](mailto:competition@waikatophotosoc.org.nz)  
with your name on the front of the file.



*Right:*

*Winner of 'HS James Memorial*

*Landscape Competition (Prints)*

*Top: Studios Kaitlyn*

*Middle: Clearing Morning Mist*

*Bottom: Nature's Artistry*



*Barry Smith*



## From the president:

We are quickly getting to the end of the year with our last monthly competition entries due in this week. The committee have put together a list of interesting topics for next year that will hopefully give everyone an opportunity to be challenged as well as to use your talents. This month for our skills night we are looking at some of the free programs and add ons you can use for editing your photos. We have identified Nik, Topaz, ICE, Flaming Pear and Pixlr which we will demonstrate. If you know of others and have them on a device, such as a laptop, that can be bought along then please bring along and share.

I will be away for the last 2 meetings this month and the field trip but the committee are very capable and will run the meetings efficiently. The 5th Tuesday this month the club will be meeting under the Victoria bridge to do some night photography. I have suggested someone could bring some steel wool to do some fire photography or some lights to swing around.

Many of the committee will be away for the date of the Field trip (28 October) and due to Labour weekend and the school holidays this weekend was determined to be the best date for the trip. If someone else would like to step up and lead this field trip please let us know. We just need to have a meeting place to carpool from and someone to check that everyone that gets there leaves safely.

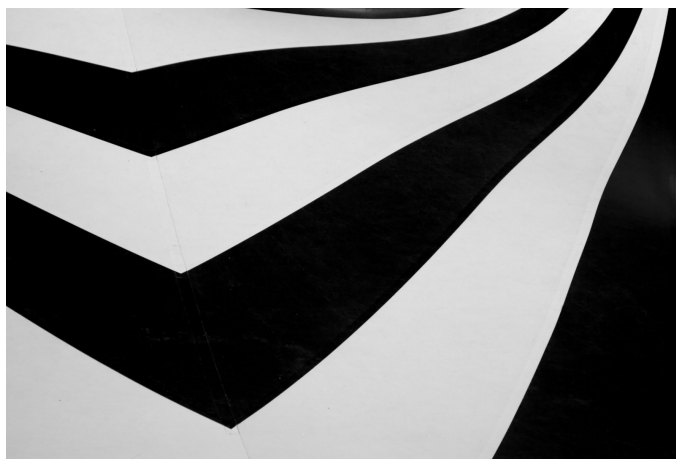
Because of a number of the committee being away around the end of October and beginning of November we are asking for digital end of year entries to be submitted a few days earlier on Friday 10 November.

A reminder will be sent closer to this date.

Get your photos ready for the last meeting in November before the end of year prizegiving. We will be having a share your shots night and we want to see what everyone has been up to. A number of people have been travelling and if you have been someone interesting this year and would like to share information on where you went and good photo opportunities you discovered, then let us know and we will allocate you more than the 5 minute time limit we usually give everyone. A reminder about this will come out next month.

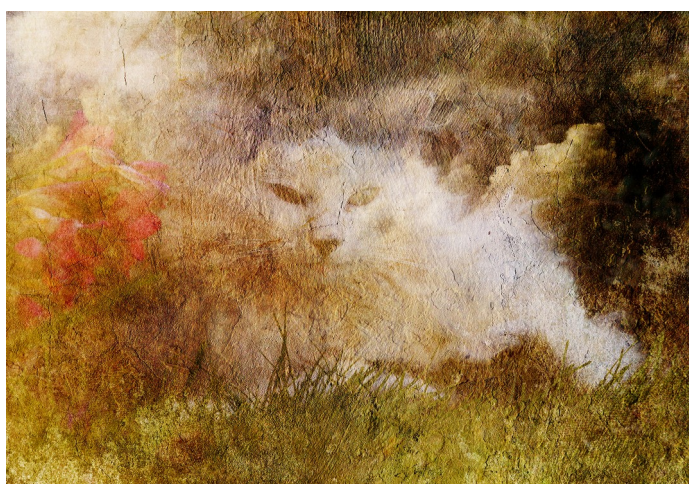
## Jacqui

*Right: 'The Big Top Tick'  
by Mary Lorier*



## **PROGRAMME FOR OCTOBER AND NOVEMBER**

- 10 Oct Set Subject: 'A Slice of New Zealand'.  
Bring in entries for 'Faces'
- 17 Oct Skills night – demonstration of some free computer programmes -  
Topaz, Nik, ICE, Flaming Pear, Pixlr etc..
- 24 Oct Five Ways Exchange. We look at our own entries and those from 4  
overseas clubs (Exmouth Photo Group, Edinburgh Photographic Society,  
Gibraltar Photographic Society, Moussy Art Photo (France).
- 31 Oct Night Photography. Meet on Grantham St. At 7 pm under the Victoria Bridge.  
(Sunset is at 7.52)



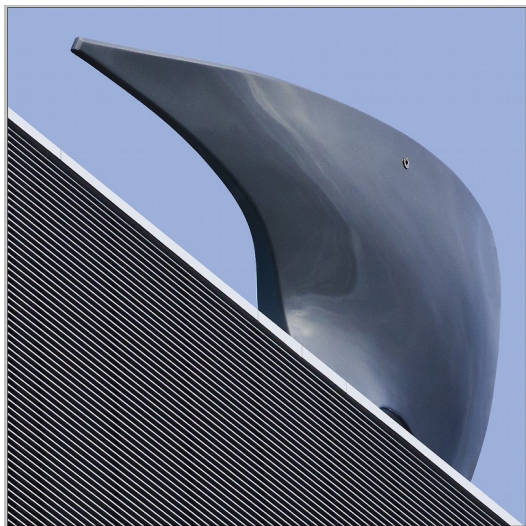
*Left: 'In the Garden'*

*by Kaylene Helliwell*

- 7 Nov Committee Meeting
- 10 Nov Digital Entries for the End of Year Competition due. (Friday before club night)
- 14 Nov Set Subject: Faces. Bring print entries for End of Year.
- 21 Nov Skills night
- 25 Nov Trip to Ngatea Water Gardens, after which, those who want to, have the option  
to go to Thames (20 mins away) to see the old bridge before sunset.  
(sunset at approx. 8.15)
- 28 Nov Share your shots

**“Photography for me is not looking, it's feeling. If you can't feel what  
you're looking at, then you're never going to get others to feel anything  
when they look at your pictures.”**

**— Don M**



'Simplicity' by Val Fabling



'Black Cat' by Josh York

## **End of year Awards – *Submit Digitals by November 10<sup>th</sup> (Friday)* and Prints on November 14<sup>th</sup>**

**Up to** four entries (from each medium) i.e. a maximum of 8 images (4 projected + 4 print), may be entered **from entries submitted during the current competition year** (February to November)

You may use any images, including ones from Landscape Memorials or Photojournalism competitions. (Waikato Photographic Society images only).

The following awards will be selected from images entered:

1. In **EACH GRADE**: Champion colour projected image, Champion monochrome projected image, Champion colour print, Champion monochrome print.
2. **OPEN** competitions .... Champion Nature Print and Champion Nature Projected Image
3. **ALL MEDIA ALL GRADES** competitions: Champion Portrait, Champion Landscape, Most Creative Image.
4. **Photojournalism** and **Landscape Memorials** have been judged during the year

The judge decides which images will be considered for each "award"

Competition Rules state: "Entries in the annual competition will be judged to a high standard and no award will be made in any year if, in the opinion of the judge, a sufficient standard has not been reached".

### **Prints**

It may be that a Print image you have selected is being judged on the 14th November, if so bring along the relevant Print slip and there will be glue available so you can glue it on the back.

**Please replace** the original Print slips on the back of your images, with the End of Year ones.



## Things to see and photograph;

### Pooch Racing

Sunday 15<sup>th</sup> Oct

9.00 – 3.30pm (or part thereof)

Cambridge Raceway



This is a fun-filled day for people and their pet pooches, that involves entering their dogs in a 100 metre race on the Greyhound track at the Cambridge Raceway. The event is being run to raise money for Assistance Dogs NZ, and all proceeds go to them.

‘Heartstrings Photography’ (Lynda Mowat) and ‘Hot Shotz to go’ are covering the photography for the event and invite you to come and help out. There is a variety of shots to be had, including action, dress up, podium shots, and more. The photos will be shared after the event for participants to view.

If you can help out, please contact Lynda on 027 623 9596 to let her know or if you need more information. It's always a great day!

### NZ Open Dance Championships:

Mystery Creek Oct 28<sup>th</sup>



### Claudelands:

Waikato Home and Garden Show: this weekend.

Waikato Agricultural and Pastoral Show: Oct 27<sup>th</sup> – 29<sup>th</sup>

### Blossoms and Tulips

Hamilton Gardens.

### Steam Punk

Oct 28<sup>th</sup> at Glenbrook

Hamilton Half Marathon This coming Sunday 8<sup>th</sup> Oct



Weathered Trammel by Claire Sherrington



Sunken Tree by Josh York

Winner of Margaret McDiamid  
Landscape Competition (digital)

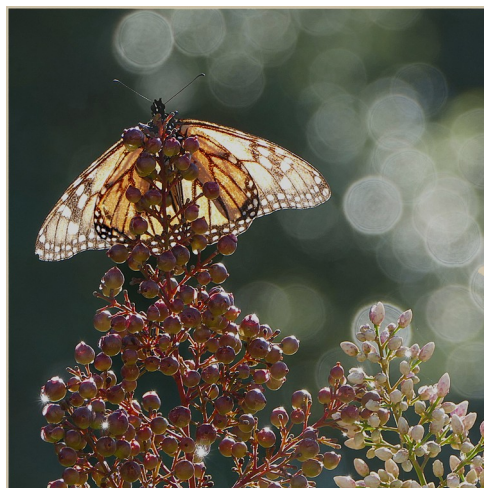
'A Day" by Margi Parton



*The day beckons*



*Busy Day*



*Relaxing day*

## Subjects for 2018

The following is the list of subjects that the committee have chosen for 2018. The order is not decided yet, apart from the first one, due in February.

**Shallow depth of focus (February)**

**All creatures great and small**

**Buildings or part thereof**

**Patterns and Repetition**

**In the style of.....**

**Monochrome**

**Activity**

**Square Format**

**Landscape**

**Silhouette**

Results: 'Abstract' Judge: Margaret Brownsey

PRINTS		
<b>NOVICE</b>		
<i>Colour ~ Open</i>		
Commended	Kirsty Hanley	Great Wall + Cathedral Cove
<b>INTERMEDIATE</b>		
<i>Colour ~ Set Subject</i>		
Honours	Val McArthur	Misty Mountains
Highly Commended	Adam Wardle	Piha Dawn
Accepted	Val McArthur	Winter

<b>A GRADE</b>		
<b><i>Mono ~ Set Subject</i></b>		
Highly Commended	Lynda Mowat	Wings
<b><i>Colour ~ Open</i></b>		
Highly Commended	Julie Salisbury	Oyster Catcher Chick
Accepted	Julie Salisbury	Kaikoura Seal
<b><i>Colour ~ Set Subject</i></b>		
Honours	Hartmut Joschonek	Autumn Storm
Highly Commended	Lynda Mowat	Blue burst
Commended	Jacqui Stokes	Tropical Fronds
	Val Fabling	Tranquility + Draining Away
Accepted	Hartmut Joschonek	Live at Viaduct Harbour
	Jacqui Stokes	Autumn Winds
	Warwick Kellaway	Neither fish nor fowl
<b>PROJECTED IMAGES</b>		
<b>NOVICE</b>		
<b><i>Mono ~ Set Subject</i></b>		
Honours	Claire Sherrington	Weathered Trammel
	Mary Lorier	The Big Top Tick
<b><i>Colour ~ Set Subject</i></b>		
<i>Highly Commended</i>	Mary Lorier	Swinging the Blues
	Claire Sherrington	El Dorado
	Peter Sampson	Abstract blue
<i>Commended</i>	Chris Beale	Shielded
	Peter Sampson	Govett Brewster
	Nic Greene	Nautica
<i>Accepted</i>	Kirsty Hanley	Tree Dimension
<b>INTERMEDIATE</b>		
<b><i>Mono ~ Open</i></b>		
<i>Commended</i>	Adam Wardle	Waikato Hospital at Dawn
<b><i>Colour ~ Set Subject</i></b>		
<i>Highly Commended</i>	Val McArthur	Escaped
<i>Commended</i>	Chris Hague	Abstract 8 + Abstract 9
	Adam Wardle	Rust and Rock
	Val McArthur	Circular Quay
<b>A GRADE</b>		
<b><i>Mono ~ Open</i></b>		
<i>Honours</i>	Josh York	Black Cat
<b><i>Mono ~ Set Subject</i></b>		
<i>Honours</i>	Josh York	Sunken Tree
<b><i>Colour ~ Open</i></b>		
<i>Commended</i>	Julie Salisbury	Karangahake Rail Tunnel
<i>Accepted</i>	Margi Parton	Sunrise

<b>Colour ~ Set Subject</b>		
<i>Honours</i>	Kaylene Helliwell	In the Garden
	Val Fabling	Simplicity
<i>Highly Commended</i>	Kaylene Helliwell	Music to the Stars
<i>Commended</i>	Val Fabling	Liquefaction
	Lynda Mowat	Summer Colours
	Julie Salisbury	Ruins
	Judy Alley	Cheese Grater + Off the Wall
	Jacqui Stokes	Floating
	Hartmut Joschonek	Running through the Wood
		+ In Construction
<i>Accepted</i>	Rose Kerin	Auckland Shades
	Margi Parton	Abstract
	Lynda Mowat	Splosh
	Jacqui Stokes	Colours
	Fergus Campbell	Green Plant
	Barry Smith	Bricks