

Waikato Photographic Society Inc.
Hamilton's Camera Club
HAMILTON
www.waikatophotosoc.org.n

COMMITTEE

President: Jacqui Stokes

Secretary: Lynda Mowat

Treasurer: Val McArthur

Competition Secretary: Val Fabling

Aperture: Margi Parton

Field Trips: Margaret Liddell, Rose Kerin

Members: Georgia McArthur, Kay Goosen-Cooper FPSNZ HonPSNZ,
Hartmut Joschonek

Co-opted: *International Exchange & Judging Training:* Janet Greenwood

*“Perfection is not attainable
but if we chase perfection
we can catch excellence”
Vince Lombardi*

MEETINGS

7.30pm 2nd & 4th Tuesday of the month
Methodist Church Hall, 6 Bader Street, Melville

PHOTOGRAPHY SKILLS NIGHT

7.30pm 3rd Tuesday of the month
22 Kensington Place, Chartwell

COMPETITION ENTRIES

Due on the 2nd Tuesday of the month.

Either: Bring prints and projected images on disc to the meeting

or email to competition@waikatophotosoc.org.nz with your name on the front of the file.



The topic for February was “Close Up”

Left: Tongues of Fire – by Val Fabling

From the president:

This edition of Aperture will find most of you stuck at home. Hopefully you are putting some of your time to practise your photography around your home. Check out You Tube and our Facebook group page for lots of ideas and free videos to learn some new skills.

At the moment we don't know when we will get to meet again as our most important objective is to make sure our members stay safe and don't risk getting sick. So instead we shall continue to provide as much of the planned program on the internet as possible. This means entering competitions via email and presenting the results via video. An email will be sent out this weekend with the entry form. You will still be able to only enter 2 projected images. We are putting together a video of all the results and a link will be emailed to you to view this. This month's topic is "Growing Wild"

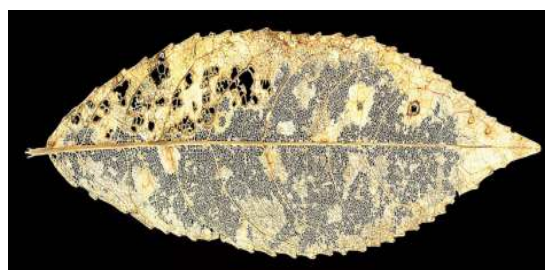
This month we were supposed to have a Photoshop night on putting together triptychs. This will be put together as a video and a link sent out to members along with the templates for members to use. Keep an eye on the Facebook group as we will put up some ideas for you to do some photography at home. <https://www.facebook.com/groups/WaikatoPhotography/>. If you have ideas you would like to share with members or photos you have taken I am sure that others would like to see them here.

Just before we were all sent home we were saddened to hear of the passing of a life member and a friend to many of us, John Greenwood. Our condolences go out to Janet and her family at this difficult time.

Jacqui Stokes, President



Left: Wildebeest at the waterhole, South Africa – Julie Salisbury



Above: A Forest Forage Find - Mary Lorier

John Greenwood

Almost as soon as John joined the WPS, he became involved with Committee, serving as President, among other positions. He was an immense driving force when we ran a PSNZ National Convention and two Northern Regional Seminars.



He was a respected PSNZ Judge, evaluating monthly competitions for many Clubs around New Zealand, including ours, as well as helping to select National Salons, Interclub contests and numerous other events.

John was a prolific photographer, earning many, many Honours and trophies in the Camera Club, and winning competitions, both here and all over New Zealand. He was a dynamic person to be around, teaching and inspiring others to better their own photography.

A few years ago both he and Janet were made Life Members of the Camera Club. A very well deserved acknowledgement of all their work for the Club.

(The above is an abbreviation of Kay Goosen-Cooper's words given at John's funeral.)



Cates rose – by Brian Wills



Beauty in Imperfection – by Val Fabling



On the nose – Lynda Mowat



Peace Lily – Adam Wardle



The Neighbour – Kaylene Helliwell



The Gannet – Julie Salisbury

Notes for the next two topics:

Growing Wild Entries Due by 14 April

In nooks and crannies, emerging through cracks in concrete, climbing over ruins, hanging from gutters and clinging to rocky outcrops...they find a space and fill it. They are survivors, and opportunists. They are wild, frustrating, sometimes noxious and invasive but often very, very beautiful. They are wild flowers, weeds and grasses

Where they grow in large colonies the flowers fill the countryside with glorious colour e.g. Tekapo ~ lupins, Wellington ~ pink ragwort and gorse, Kaikoura ~ antirrhinums

Growing wild : growing naturally without being planted or cared for by humans.

The Set Subject: includes plants from the roadside, tussock areas, seashore dunes, alpine areas, wetlands, wastelands, beside waterways, and hedgerows. Forest and scrubland...yes, native bush ...no. It does not include trees, fungi or "one offs " from dumped garden waste.

Suggestions: Shrubs: (briar rose, heather, broom); vines and climbers (honeysuckle, ivy, toadflax); grasses (pampas, roadside grasses); noxious/invasive plants (banana passion fruit, blackberry, agapanthus, wild ginger, thistle); poisonous plants: woolly nightshade, moth plant; roadside weeds (buttercup, dandelion, daisy, clover, cow parsley, plantain)

Triptych Entries Due by 12 May

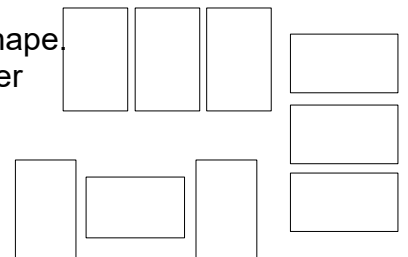
Photographic triptychs are usually 3 individual images arranged with a plain border between them. However if a background is used it should complement the presentation of the three images but must not become a significant "fourth image" in the message of the triptych's three images.

Alternatively a single photograph may be "cut" into three parts which then provide the three elements for a triptych. In this case the resulting triptych should certainly have a linkage between its components ...they were originally one image! However to be successful the "new" triptych image must provide the viewer with something extra over the original. Cutting for the sake of cutting is not a guaranteed way of producing a strong triptych.

Think about your final aspect ratio: There are endless possibilities here. The important consideration is how the images work together. Suggested triptych aspect ratios:

The three images do not have to be the same size or the same shape.

- Three 2:3 aspect ratio portrait images placed next to each other
- Three 3:2 aspect ratio images placed one above the other
- Three square images side by side
- Two larger images flanking a smaller one and vice versa



What makes a triptych a successful triptych? The individual photographs must be technically competent...putting three poorly-produced pictures together is not likely to result in a strong final image.

The total triptych should demonstrate the creativity of the photographer by the approach taken with a familiar subject or by the choice of an unusual subject.

Maximum sizes apply ...

- The complete Digital triptych must not exceed 1620 wide x 1080 high
- All 3 print images to be mounted on one backing board



Left: *Got my eye on you* - Kaylene Helliwell

Above: *Come closer* - Lynda Mowat

Drewery Cup Photojournalism Award

1. The award will be known as the DREWERY CUP and will be competed for annually, to encourage members to develop an interest in photojournalism and to increase their skill in this aspect.
2. The cup will be awarded for the best image, or for a set of not less than THREE (3) or more than SIX (6) images in the same media. Sets must illustrate a specific theme.
3. Prints may be of any size, and may be attached collectively to a single mount of any shape, but not exceeding 40cm x 50cm. The mount may be arranged so as to fold. Projected images must conform to the WPS specifications (see 6 (b)).
4. Each set must be clearly captioned, indicating its theme. In print entries this should be on the face of the mount. For projected image entries, two copies of the captions must be provided, preferably typed and double-spaced.
5. Entries will be judged by a person experienced in photojournalism. Such person need not be a PSNZ Panel Judge.
6. Entries will be judged to a high standard and no award will be made in any year if, in the opinion of the judge, a sufficient standard has not been reached.
7. If two images in a set are so similar as to be considered by the judge as repetition inconsistent with the theme, the second image shall be disregarded.
8. Not more than TWO (2) sets or TWO (2) individual images in one media, a total of FOUR (4) entries may be submitted by any one member.

Images entered in this competition are also eligible for entry in the monthly competitions.



Busy Bee – Hartmut Joschonek



Mechanics Hand – Shirley Warner

MARCH 2020 UP CLOSE Judge: Shona Kebble APSN

A GRADE PRINTS		
MONO SET SUBJECT		
<i>Honours</i>	Lynda Mowat	Butcher Bird
<i>Highly Commended</i>	Lynda Mowat	Skin Tones
COLOUR SET SUBJECT		
<i>Honours</i>	Julie Salisbury	Wildebeest at the Waterhole, S Africa +
		The Gannet
<i>Highly Commended</i>	Val Fabling	Beauty in imperfection
	Hartmut Joschonek	Busy Bee
	Jacqui Stokes	Pink Buds
	Hartmut Joschonek	New to this world
<i>Commended</i>	Jacqui Stokes	Bumble Bee
	Val Fabling	Gomphocarpus physocarpus
	Val McArthur	Seed Nest
	Warwick Kellaway	Rosa Aurea Una +
		The Piston and the Barberry
PROJECTED IMAGES:		
NOVICE		
MONO SET SUBJECT		
<i>Honours</i>	Virginia Franklin	Untitled
<i>Commended</i>	Lorne Guilding	Shell group
COLOUR OPEN SUBJECT		
<i>Highly Commended</i>	Mike Lorier	Water cascade
<i>Commended</i>	Manfred Vogel	Home away from Home
COLOUR SET SUBJECT		
<i>Honours</i>	Shirley Warner	Mechanic's hand
<i>Highly Commended</i>	Max Watson	Eye See You
	Hans Hockey	Blacks and tans
<i>Commended</i>	Mike Lorier	Kopakopa
	Manfred Vogel	Freddy the Frog and Frieda the Snail
	Shirley Warner	Lily
	Virginia Franklin	Untitled
	Lorne Guilding	Bee on flax

	Hans Hockey	Bubble bubble
	Max Watson	Shall I go in
INTERMEDIATE		
MONO SET SUBJECT		
<i>Highly Commended</i>	Naty Enrique Panzo	Stay Still
COLOUR SET SUBJECT		
<i>Honours</i>	Brian Wills	Cates Rose
	Mary Lorier	A Forest Forage Find
<i>Highly Commended</i>	Cara Rintoul	Honeybee in Flight
	Naty Enrique Panzo	Red and Juicy
<i>Commended</i>	Cara Rintoul	Jumping Spider
	Brian Wills	Bee Harvest
<i>Accepted</i>	Mary Lorier	Take the rough with the smooth
A GRADE		
MONO ~ OPEN SUBJECT		
<i>Highly Commended</i>	Adam Wardle	Backhand Full Stretch
COLOUR ~ OPEN SUBJECT		
<i>Highly Commended</i>	Judy Alley	Useful Plastic + Into a Secret Garden
COLOUR ~ SET SUBJECT		
<i>Honours</i>	Kaylene Helliwell	The Neighbour + Got my eye on you
	Lynda Mowat	Come closer
	Val Fabling	Tongues of Fire
<i>Highly Commended</i>	Chris Hague	Unicorn
	Jacqui Stokes	Sunny Day Bee
	Rose Kerin	Spring Flower
	Andre Mutavdzic	Good day
	Julie Salisbury	Bright-eyed Baboon, Botswana +
		Big Bum & Little Bum, South Africa
	Rose Kerin	Dahlia
<i>Commended</i>	Hartmut Joschonek	The next Generation + Pink Beauty
	Andre Mutavdzic	Acacia Blossom
	Val Fabling	Ready for action
<i>Accepted</i>	Val McArthur	Tucking in + Solo Dancer
	Chris Hague	Capsicum
	Jacqui Stokes	Chrysalis

